



# MONTHLY MEMBERSHIP PROGRESS REPORT

District 26 M5

Results as of: 5/31/2015

GMT: HAL GRIFFIN

LOCATION MISSOURI

GMT CA 1

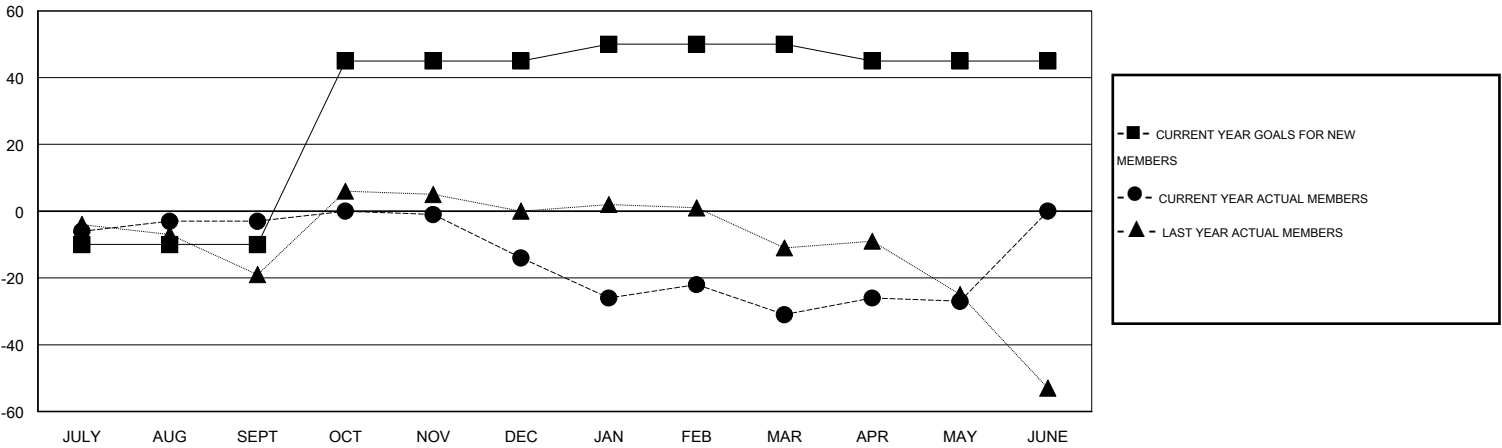
Clubs				
RESULTS FOR 2014-2015				
QUARTER	NEW CLUB GOAL	NEW CLUBS	DROPPED CLUBS	NET GAIN/LOSS
JULY/AUG/SEPT	0	0	0	0
OCT/NOV/DEC	1	0	0	0
JAN/FEB/MAR	0	0	0	0
APR/MAY/JUNE	0	0	0	0

Members				
RESULTS FOR 2014-2015				
QUARTER	NEW MEMBER GOAL	CHARTER AND NEW MEMBERS ADDED	DROPPED MEMBERS	NET GAIN/LOSS
JULY/AUG/SEPT	-10	30	33	-3
OCT/NOV/DEC	55	19	30	-11
JAN/FEB/MAR	5	34	51	-17
APR/MAY/JUNE	-5	19	15	4

GOALS AND ACTUAL NEW CLUBS CUMULATIVE



GOALS AND ACTUAL MEMBERS CUMULATIVE



DROPPED CLUBS: 0	30 CLUBS OF 52 ADDED 1 OR MORE NEW MEMBERS	<b>GENDER DISTRIBUTION</b> MALE 870 (69.82%) FEMALE 376 (30.18%)
<b>DROPPED MEMBERS</b> DECEASED 23 CLUB CANCELLED 0 OTHER 106 TOTAL 129	<a href="#">CLICK HERE FOR HEALTH ASSESSMENT DATA</a>	FAMILY UNIT MEMBERS 258 HEAD OF HOUSEHOLD 126 NON-HEAD OF HOUSEHOLD 132